



COUNTY GRANT MEETING

\$24.5 Million

SEVEN YEARS

1 of 4 State Grants Funded

WV Higher Education Policy Commission

Fiscal Agent

Service Region

11 Counties Served

50 Schools

College Partners

Glenville State College | Marshall University | SWVCTC



West Virginia GEAR UP
Service Areas and Schools
 2021-22 Academic Year



SOUTHERN REGION - served by *Southern West Virginia Community and Technical College*

BOONE: Madison Middle School; Scott High School; Sherman Junior High School; Sherman High School; Van Junior/Senior High School

LOGAN: Chapmanville Middle School; Chapmanville Regional High School; Logan Middle School; Logan High School; Man Middle School; Man High School

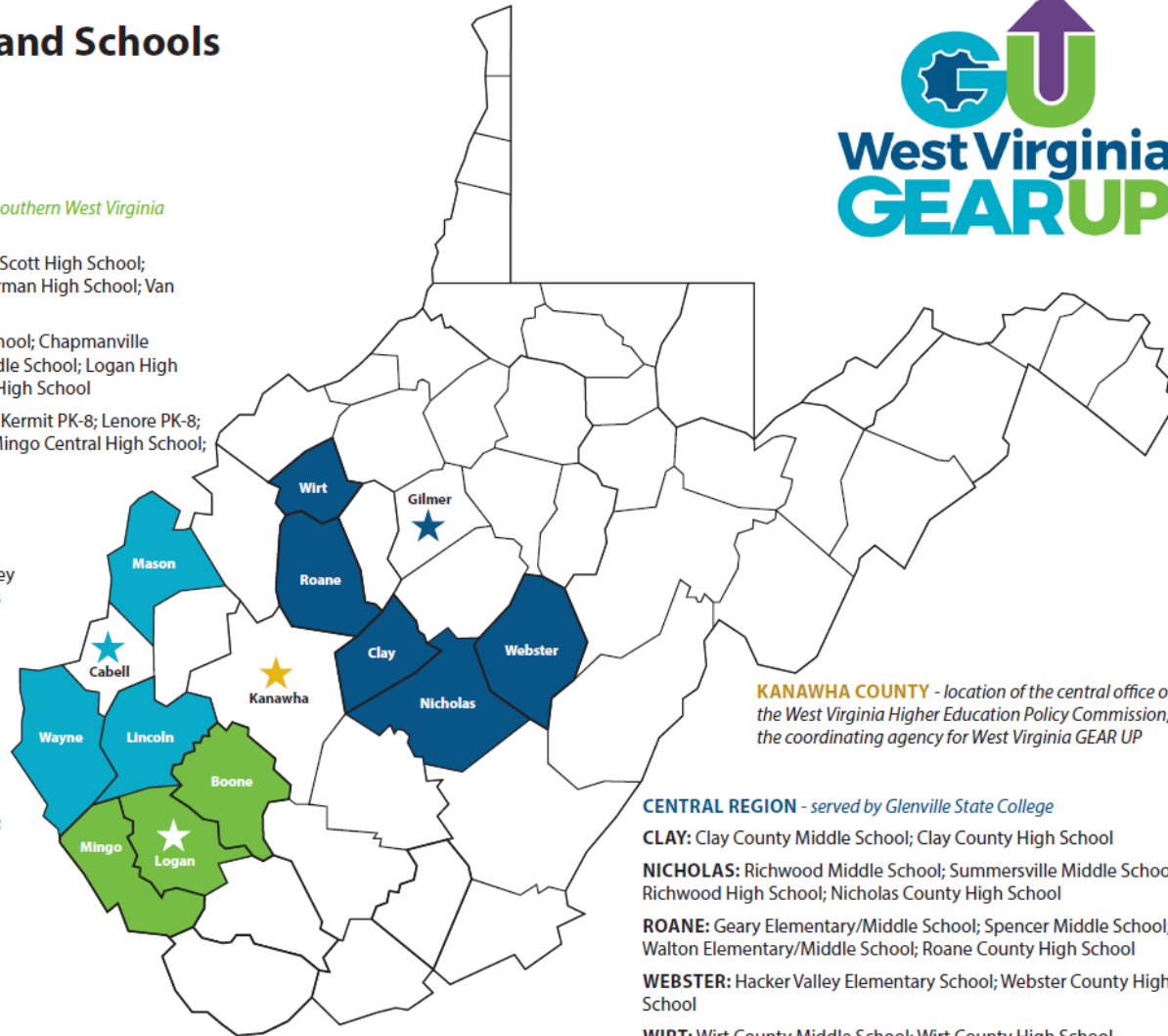
MINGO: Burch PK-8; Gilbert PK-8; Kermit PK-8; Lenore PK-8; Matewan PK-8; Williamson PK-8; Mingo Central High School; Tug Valley High School

SOUTHWESTERN REGION - *Marshall University*

LINCOLN: Duval PK-8; Guyan Valley Middle School; Hamlin PK-8; Harts PK-8; Lincoln County High School

MASON: Hannan High School; Point Pleasant Junior/Senior High School; Wahama High School

WAYNE: Buffalo Middle School; Ceredo-Kenova Middle School; Crum PK-8; Fort Gay PK-8; Vinson Middle School; Wayne Middle School; Spring Valley High School; Tolsia High School; Wayne High School



KANAWHA COUNTY - location of the central office of the West Virginia Higher Education Policy Commission, the coordinating agency for West Virginia GEAR UP

CENTRAL REGION - served by *Glenville State College*

CLAY: Clay County Middle School; Clay County High School

NICHOLAS: Richwood Middle School; Summersville Middle School; Richwood High School; Nicholas County High School

ROANE: Geary Elementary/Middle School; Spencer Middle School; Walton Elementary/Middle School; Roane County High School

WEBSTER: Hacker Valley Elementary School; Webster County High School

WIRT: Wirt County Middle School; Wirt County High School

WWW.WVGEARUP.ORG



HYBRID MODEL

TWO COHORTS

Class of 2027 and 2028

PRIORITY GROUP

Each year's senior class

FIRST-YEAR OF POSTSECONDARY

Each year beginning in year 2

STATEWIDE SERVICES

Ongoing



WV GU STAFF Model

HEPC Central Office Staff
Grant Administrative Offices

Campus Partners
Regional Program Directors

Counties
Assigned County Coordinator

School Site Coordinator(s)
Each school has 1 SC at minimum
Contract with Counseling Office Staff



FISCAL & ADMINISTRATIVE

Annual Subawards

County subawards based on enrollment size
Approximately one million dollars sub awarded annually to counties

Workplan Implementation

Funds used to implement pre-approved workplan at school level

Invoicing

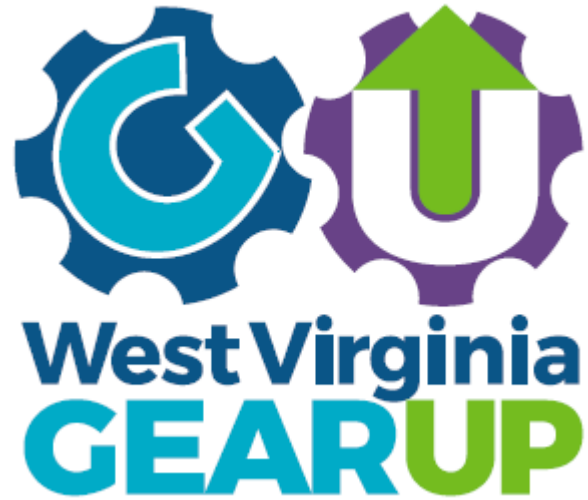
Reimbursement basis invoiced monthly

Supplanting Unallowable

Funds cannot be used to supplant

Federal Regulations and Uniform Guidance

Expenditures must follow federal regulations and uniform guidance



SERVICES TO STUDENTS, FAMILIES, AND EDUCATORS



Academic Enrichment
 Academic Day Camps
 Tutoring/DE/AP
 STEM Activities
 ACT/SAT Prep

SEL Services
 Mentoring
 Student Leadership

Financial Aid Assistance
 College Admissions
 College Readiness

Campus Visits
 Summer Academies

Classroom Enhancements
 Professional Development
 Parent Services

Minimum Project Services	Cohort Students Year of Service							Priority Students	S - Student F - Family E - Educator	Performance Measures
	1	2	3	4	5	6	7	Annual Services	Audience	
Academic Rigor and High School Graduation										
Academic Planning/Career Advising			•	•	•	•	•	•	S, F	1a, 2a, 2b, 2c
Credit Recovery, Advanced Placement, and Dual Credit Opportunities					•	•		•	S	2a, 2b, 2c
STEM Programming: Computer Science, Coding, and Robotics	•	•	•	•	•				S, E	2a, 2b
Pre-Algebra/Algebra I Support Programming	•	•	•						S	1a
Statewide Student Success Summit, College-Going Culture PD	•	•	•	•	•	•	•	•	S, F, E	1a, 2a, 4c
Tutoring Support	•	•	•	•	•	•	•		S	1a, 2a, 2b
Financial Aid and College Knowledge										
College Access/Success Counseling and College Match			•	•	•	•		•	S, F	2a, 2b, 2c, 3a
College Application and Exploration Week	•	•	•	•	•	•		•	S	2a, 2b, 4c
College Campus Visits and College Decision Days	•	•	•	•	•	•		•	S, F	2a, 4c
College Foundation of WV Workshops for Students, Families, and Educators	•	•	•	•	•	•	•	•	S, F, E	2b, 4c
FAFSA Completion Workshops						•	•	•	S, F	3a
Financial Literacy	•	•	•	•					S	3a
Parent Peer Network		•	•	•	•	•			F	2a, 2b, 2c, 4a, 4c
Parent/Family College Prep Advising and Financial Aid/Literacy Workshops		•	•	•	•	•	•	•	S, F	2a, 2b, 3a, 4a
Postsecondary Enrollment and Success										
ACT/SAT Preparation					•	•		•	S	2a
Bridge, Transition to College, and Retention Programs					•	•	•	•	S, F	2a, 2b, 2c
Spring Career Academy			•	•	•				S	2a, 2b, 4a, 4c
Student Leadership Academy/ Summer Academic/College Prep Academy			•	•	•	•			S	2a, 2b, 4a, 4c
Text 4 Success College Counseling Intervention						•	•	•	S, F	2b, 2c
Hope and Social and Emotional Learning										
HEROs Student Leadership Network (Higher Education Readiness Officers)			•	•	•	•			S, E	2a, 2b, 4a, 4c
Student Success Society: Comprehensive Mentoring		•	•	•	•	•	•		S, F	2c, 4a, 4c

ALIGNING WITH OBJECTIVES

Increase academic performance & preparation for postsecondary education

- % who pass Algebra 1 by the end of 9th grade
- Increase in daily attendance
- Increase in rate of students taking at least one Dual Enrollment course

Increase high school graduation rate & postsecondary education participation

- % promoted on time to successive grade levels
- % who graduate from high school
- % who enrolled at an IHE
- % who enrolled at an IHE and persisted to the second year

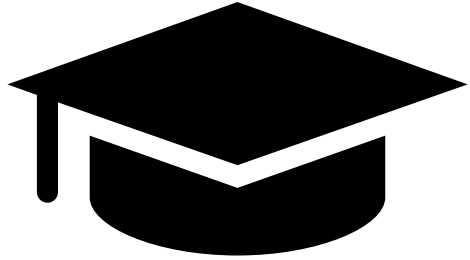
Increase educational expectations & knowledge of postsecondary options, preparation and financing

- % who complete the Free Application for Federal Student Aid

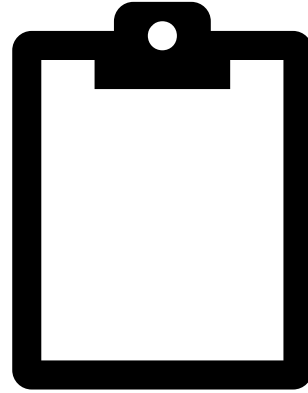
Increase hope & expectations for students' postsecondary plans

- Increase student hope (Child Hope Scale)
- School staff will increase students' educational aspirations/expectations of postsecondary options
- Increased school college-going culture

DATA COLLECTION



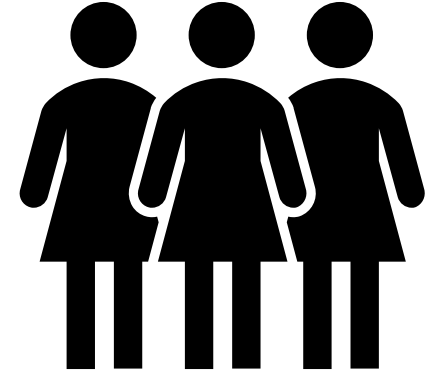
**Student, Parent &
Educator Activity
Data
(Ongoing)**



**Student, Parent &
Educator Surveys
(Annual)**



**First Cohort
Reading & Writing
Activity (7th & 8th
grade)**



**HEROs Student
Focus Groups
(Annual)**

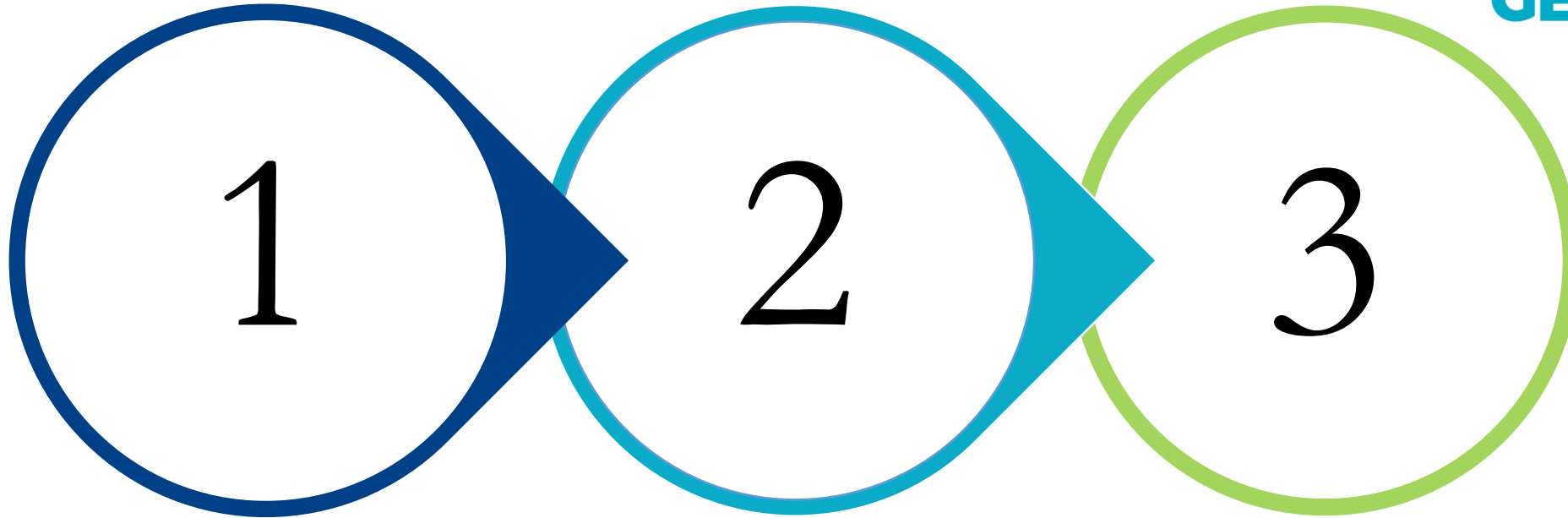
Baseline data collection expected to be conducted between February and April
Multi-party data agreement will be in place to collect data, with parents able to opt students out of surveying



STUDENT AND PARENT SURVEY SCHEDULE

Class of	School Year						
	2021-2022	2022-2023	2023-2024	2024-2025	2025-2026	2026-2027	2027-2028
2022 Students	X	X					
2023 Students							
2024 Students			X	X			
2025 Students							
2026 Students & Parents	X		X		X	X	
2027 Students & Parents	X	X	X	X	X	X	X
2028 Students & Parents			X		X		X
	Year 1	Year 2	Year 3	Year 4	Year 5	Year 6	Year 7

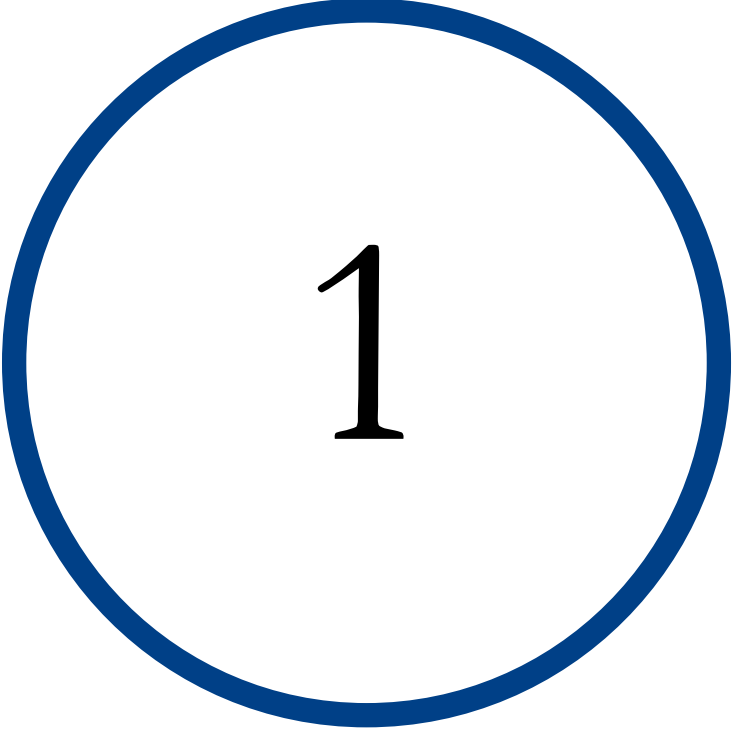
NEXT STEPS



COUNTY/PRINCIPAL
MEETING RECOMMEND SITE
COORDINATOR(S)

NOTIFICATION OF
CONTRACTS/SC
REGISTRATION

LAUNCH MEETING
JANUARY 18-19



1

Email Follow Up

J.R. Luyster will follow up by email with a recap and details to recommend site coordinators online

County Follow Up with Principals

Please follow up with principals in your county either via email or by scheduled meeting

Site Coordinator Recommendations

County Coordinators work with principals to recommend site coordinators. Site Coordinators should be school counselors

Submit Recommendation Online

Using the link provided after today's meeting, please register recommendations online



Site Coordinator Contract Award Notifications

HEPC will notify county/schools and site coordinators of selections

Site Coordinator Registration

HEPC will request SC's to register their contact information for contracts



WV GEAR UP Program Launch Meeting

January 18-19
Charleston, WV

January 18

Half day with county and school personnel, as well as county and site coordinators

January 19

Full day with county and site coordinators



COUNTY GRANT MEETING